

KRISLUND SUMMER CAMP

Day, Residential, and Family Camp
Programs for all ages!



Krislund is a ministry of the Carlisle, Huntingdon, and
Northumberland Presbyteries of Pennsylvania

LETTER

FROM THE DIRECTORS

Hi Everyone!

When we made the decision to cancel camp in 2020, we were heartbroken at the thought of an entire Summer with no campers. No evening worship, no group games in the field, and no new relationships formed. 2020 ended up being a year of opportunity for us. We reevaluated all of our programs, set goals, and got an entire extra year to plan the best Summer yet!

This year, campers will stay with their cabin group all day and do activities with that group to reinforce their bond. Staff will work with the same age-group all Summer, and have been specially chosen for each of those ages. Programming will focus on building relationships, learning to lead, experiencing new things, and growing closer with God.

We are so thankful for the opportunity to honor tradition and embrace the future with Krislund's programming. We hope you join us to see what's new!

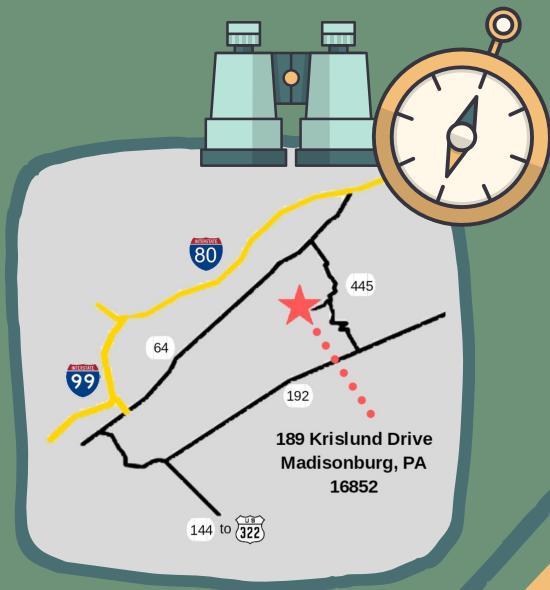
Blessings,
Josh and Kealy



REGISTER AT KRISLUND.ORG

WELCOME TO KRISLUND

Our mission is for all people to encounter God, build relationships, and experience creation by giving them a place where they can learn through outdoor recreation, adventure, worship, and small group living. We offer a variety of programs for all ages and interests, so take a look inside to find a program for you! Campers are challenged to grow spiritually, physically, emotionally, and socially at Krislund.



FOR MORE INFO CALL (814) 422-8878

DAY CAMP

Sprout Day Camp is a faith-based program for campers entering grades 1-5. Sprout Day Camp focuses on providing opportunities for kids to be outdoors, participate in new and fun activities, and make friends. Every week, day campers decorate their pavilion to match their theme, which changes

each week so that returning campers always have something to look forward to! Transportation, two snacks, and lunch are included for just \$250/week.



SCHEDULE & THEMES

June 21-25
Wacky Water Week

July 19-23
Silly Sports

June 28-July 2
Around the World

July 26-30
Every Day's a Holiday

July 5-9
Take Flight!

August 2-6
Nature Discovery

July 12-16
Art Extravaganza

August 9-13
Out of this World

REGISTER AT [KRISLUND.ORG](https://www.krislund.org)

PROGRAMS

New!

STEM Day Camp is a new program specially designed for our Day Campers entering 6th-8th grade. These Day Campers will do STEM projects, learn about nature and Pennsylvania ecology, have additional time for the high adventure course, and be able to spend Thursday night at Krislund at no extra cost! During the overnight stay, STEM Day Campers will stay in our gym with at least two employees, go night swimming in the pool, and do special evening games and activities. Transportation, two snacks, and lunch are included for just \$270/week!

TRANSPORTATION

**Innovation Park,
State College**

8:30 am pickup
5:30 pm dropoff

**Weis Market,
Bellefonte***

8:30 am pickup
5:30 pm dropoff

* limited seating



FOR MORE INFO CALL (814) 422-8878

RESIDENTIAL



DISCOVERERS CAMP (*grades 3-5*) is where young campers fall in love with Krislund! Discoverers Camp is held in week-long sessions and offers extended pool and nature time, as well as a chance for campers to climb the rock wall and ride our 65 foot giant swing!



PATHFINDERS CAMP (*grades 6-8*) is designed specifically for middle schoolers! Pathfinders Camp is offered in week-long sessions and is full of high adventure, hiking, and the outdoors. Pathfinders are sure to leave Krislund with new friends and experiences!



PIONEERS CAMP (*grades 9-12*) is for high school students to experience the most that Krislund has to offer. Pioneer Campers explore where they have never been before and learn skills to help them be successful through high school and beyond!



LEADERS IN TRAINING (LIT) (*grades 10-12*) is one of our most loved programs. Campers must apply with an essay and references. Once accepted, LITs spend two weeks gaining skills in adventure, leadership, and communication. LITs leave camp with a network of friends and mentors, and an experience to add to their resumes!

REGISTER AT KRISLUND.ORG

PROGRAMS

MINI CAMP (*grades 1-2*) is where young campers can get their first overnight experience at Krislund! Mini Campers join us for three days and two nights. They do crafts, learn about nature, sing silly songs, and play on our mini adventure course!

FAMILY CAMP (*ages 5+*) is for families to experience Krislund together. Spend three days and two nights in one of our lodges or a private cabin. Enjoy games, swimming, archery, adventure, or spend your time relaxing together and taking in Krislund's beauty!

OUTDOOR SKILLS CAMP (*grades 8-12*) is for campers who want even more focus on the outdoors at Krislund. These campers compete in fire building competitions, build their own shelter, learn local plants and trees, cook meals over a fire with your cabin group, and even learn how to knap their own arrowhead!



REGISTER EARLY!

Every program has a limit! Residential programs are limited to 40-48 campers per program (Discoverers, Pathfinders, Pioneers, etc) while Mini Camp is limited to 26, and LIT at 24. Make sure you register early to reserve your spot in your preferred week!



FOR MORE INFO CALL (814) 422-8878

RESIDENTIAL

Open Activities are chosen by cabin groups so they can choose their adventure each day! Activities include Arts and Crafts, Pool, Slip n Slide, Field Games, Open Gym, Hiking, Tie Dye, and more!



DAILY SCHEDULE

7:45 Silly Songs and Games
8:00 Breakfast
9:00 Open Activity 1
10:00 Devotional and Snack
11:00 Open Activity 2
12:15 Silly Songs and Games
12:30 Lunch
1:30 Group Activity 1
3:00 Rest Time and Snack
3:45 Group Activity 2
5:15 Silly Songs and Games
5:30 Dinner
6:30 All Camp Game
7:45 Worship
8:30 Shower Time
9:00 Campfire
10:00 Lights Out



Group Activities are scheduled for each cabin group based on age. Campers will go through a progression program as they get older, starting out with activities like the Giant Swing and ending with High Ropes! This guarantees that every year brings something new and exciting at Krislund! Other group activities include specialized Nature Lessons and Outdoor Skills, Group Initiatives, Archery, and Team Challenges!

REGISTER AT KRISLUND.ORG

SCHEDULES

SUMMER SCHEDULE

June 27-July 2



Discoverers 1	Grades 3-5	\$420
Pathfinders 1	Grades 6-8	\$445
Pioneers 1	Grades 9-12	\$470

July 4-9



Outdoor Skills	Grades 8-12	\$455
Mini Camp (4-6)	Grades K-2	\$215
Family Camp (7-9)	Ages 5+	\$115

July 11-16



Discoverers 2	Grades 3-5	\$420
Pathfinders 2	Grades 6-8	\$445
Pioneers 2	Grades 9-12	\$470

July 18-23

Discoverers 3	Grades 3-5	\$420
Pathfinders 3	Grades 6-8	\$445
LIT (July 18-30)	Grades 9-12	\$800

July 25-30



Discoverers 4	Grades 3-5	\$420
Pathfinders 4	Grades 6-8	\$445
LIT (cont'd)	Grades 9-12	

DISCOUNTS

Early Bird

Receive \$10 off of Residential, Mini, or LIT Camp when you register before 3/13/21

Sibling

Pay full price for a week of Residential or LIT Camp and each sibling in your immediate family receives \$25 off one week of Residential Camp.

Multi-Week

Pay full price for a week of Residential or LIT Camp and receive \$50 off another week of Residential Camp.

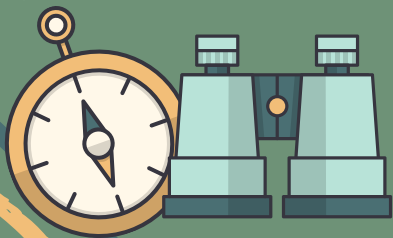
FOR MORE INFO CALL (814) 422-8878

COMMUNITY CAMP

Community Camp is a faith-based program for campers entering grades 1-6. Community Camps are similar to our Day Camp program but are held all over Pennsylvania! Every week, Community Campers participate in themed activities, do STEM activities, have a splash on Water Wednesdays, play games, and make new friendships! Community Camp is a great

way to get introduced to
Krislund!

To find a Community Camp near you, please visit our website. To book a Community Camp in your area, contact Kealy at programdirector@krislund.org



REGISTER AT KRISLUND.ORG

OUR STAFF



KRISLUND STAFF:

- are college-aged adults
- are certified in First Aid/CPR/AED
- have all required clearances
- are supervised by experienced camp professionals
- are trained based on their program area
- work with one age group all summer
- make a difference in the lives of campers



APPLY ONLINE AT [KRISLUND.ORG](https://www.krislund.org)

FAQS

Do you have to be Presbyterian to attend Krislund?

No – Krislund is open to campers of all faiths, but all campers will participate in daily devotionals and worship led by our staff and a chaplain each week.

Is financial assistance available?

Yes! Please contact our office manager, Mary, to request a scholarship. If you attend a church, you should also check to see if they offer scholarships.

Is the grade listed what they have completed or are entering?

The grade listed is the grade your child is entering in the 2021-2022 school year.

Can my child be in the same group as a friend?

Campers must be the same age, gender, and in the same program to be grouped together. On your registration you can list one bunkmate request!

What will my camper eat while at Krislund? Do you accommodate for food allergies?

We are partners on the Pennsylvania Food Program and all meals are FDA qualified, so campers get healthy snacks and meals! We will be happy to accommodate food allergies and restrictions as long as they are listed on your camper's registration. If you have any questions, please contact us.

Can campers send and receive mail while at Krislund?

Yes! We recommend bringing letters for your camper to registration and marking them with the day they are to be given out. If you would like to receive mail back, please provide stamps for your camper.

What should my child pack for camp?

Detailed packing lists for each program are available on our website and will be emailed to you before camp!